

Newsletter Term 1 Wk 8

2019



Friday 29 March 2019

Dear Parents, Caregivers and Whānau,

I have been heads up and tails down this week with lots of big hui to organize and meetings to attend! I will keep my message short and let the photos and the input from the hubs speak for themselves.

I big huge thanks to Maria, Jen and all the parents who made the year 5/6 camp at El Rancho a huge success. Both Maria and Jen have reported that the students in Rooms 1 and 2 are among some of the best students they have ever taken on camp. That is very high praise for a very cool group of students.

Well done also to the students who represented Pauatahanui School at the recent cricket "Give it a go" day at Ngāti Toa reserve. Although the weather was a bit rough it was great to see you all making the most of the opportunity.

I will echo a message that is in the BoT communication that will come out this week and remind the parent community that the triennial BoT elections are coming up in May. One sign of a healthy school community is a healthy interest in the BoT process. I hope to see lots of names on the ballot papers this year!

If you would like to know anything about being a school trustee, please feel free to contact me directly. I am sure I will be able to answer some of your questions and point you in the right direction if you have a curly question that has me stumped.

On Wednesday of this week, the current BoT had our last meeting as the incumbent BoT as our next scheduled meeting is not until after the elections. I would like to acknowledge the dedication and thought that the BoT put into their roles. There are many big decisions to make as a school trustee and we are so fortunate to have a BoT who put the students' and the staff wellbeing at the forefront of every decision they make. I know I speak for the staff when I say we think our employers are very cool!

Early next term we are going to start the big push to get Lamb and Calf Day 2019 rolling. The nature of a primary school means that there is always a natural turnover of people who take on the vital roles that support our wonderful school. As students move on to other schools, naturally so do the parents. I guess what I am hinting at is that it is now time for our new families to join the team and ensure that Wellington's 2nd biggest school fair continues to be a key date in the region's calendar. Look out for more news soon.

Bradley Roberts

Principal

NOTES FROM THE OFFICE

Pak n Save Receipts

Every time you spend money at Pak n Save Porirua—keep your receipt and bring it into the office. Make sure the receipt has your children's class number on it.

Only receipts for the current term will be accepted.

The class who spends the most money/per child over the term gets a wee treat and our school gets a commission.

Thank you Pak n Save Porirua for supporting our school!

Totals to Date	
Room	Total (per child)
1	\$138.25
2	\$56.07
3	\$265.66

4	\$56.30
5	\$83.58
6	\$92.20
7	\$32.39
8	\$34.44
9	\$91.71

Sausage sizzle

We have two more weeks of sausage sizzle left this term. If you could spare an hour on one of those Thursdays (April 4 and 11) between 12.30 and 1.30pm we would be super grateful.

Lunch Online – Pita Pit

In term 2 and 3 we will again be offering Pita Pit wraps to order through Lunch Online. The first delivery will be in week one of term two on Friday the 3rd of May. You can already register now.

It's simple; all you need to do is register at
www.lunchonline.co.nz
 and follow 4 easy steps to get started

- 1 Register an account
- 2 Add member/s including your child's name, school and classroom
- 3 Make a payment so you have funds in your account before you order
- 4 Select your lunch and place an order



 **lunchonline**
www.lunchonline.co.nz

Phone 0800 LOL LOL
 Phone 0800 565 565
info@lunchonline.co.nz

Healthy and affordable | Easy internet ordering

UPCOMING EVENTS



Book Character Day



When = Friday, 12 / 4 / 2019

What = Dress up as a character from a book and bring a gold coin donation

There are spot prizes - for creativity

Why = Fundraising for school camp

By: Ollie S on behalf of all year 5 and 6 students.



Kapa Haka Pōwhiri and Performance

Keep your eyes peeled for more info coming up soon about a pōwhiri to welcome new students and their whānau, followed by a kapa haka performance on Monday 8th April.



JUNIOR TOUGH GUY AND GAL CHALLENGE

EXTREME OFF ROAD RUNNING EVENT

Registrations for the 2019 Tough Guy/Girl are now open and once again it would be great to have a Pauatahanui School team! The event is open for children from **Year 3 to Year 8**.

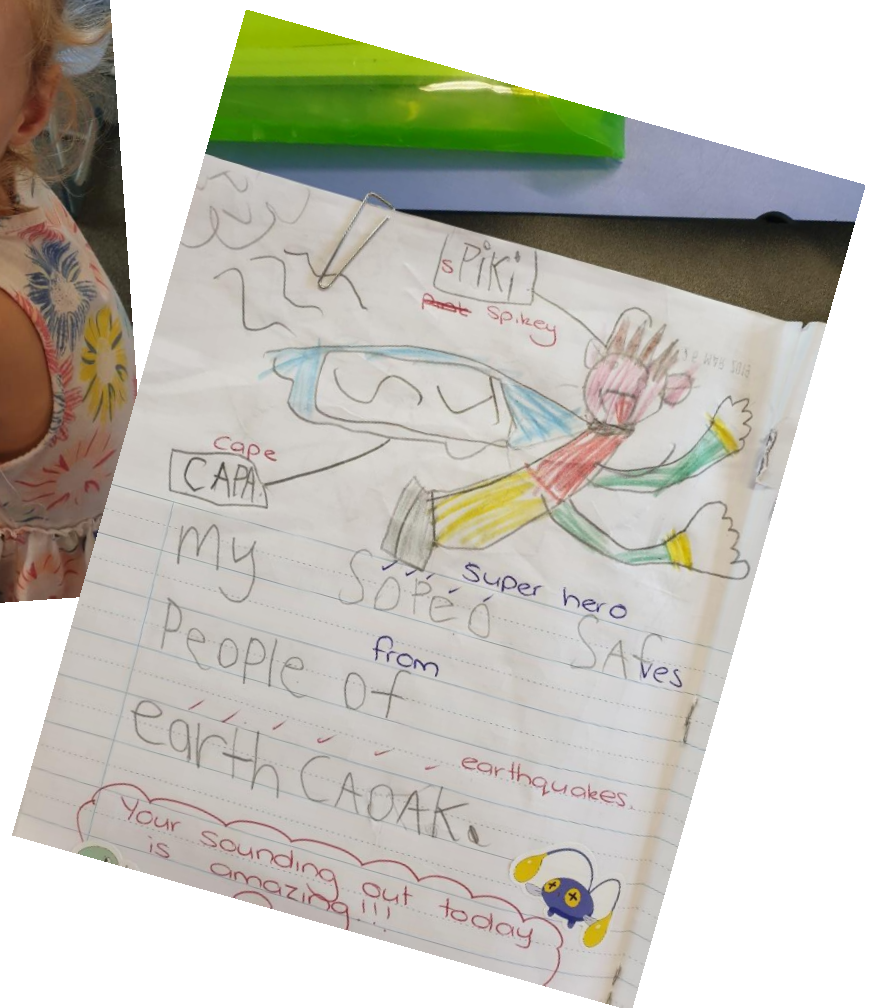
There are 2 Wellington event days, but we wish to send the school team on Thursday 23rd of May. If you wish for your child to participate, please register at <https://eventpromotions.co.nz/tough-guy-gal-challenge/wellington/#junior>. The cost is \$25 until the 13th of May- it sold out last year so hence the early notice. Miss Deller is coordinating the school team, so please email her at kerynd@pauatahanui.school.nz if you have registered your child. We rely on parent supervision and transport for this event to go ahead, so please also let her know if you are available to support in this way.

TAINUI HUB

Throughout week 8 in Tainui Hub, we have been looking at 'c', 'k' and 'ck' words. We designed our own pair of socks for a king.



For writing, we have been discussing Superheroes and designing costumes as well as describing what their superpower would be and why.



RAUKAWA HUB



Perseverance

Attitude

Understanding

Ambition





YEAR 7 AND 8 LEADERSHIP CAMP

Two weeks ago the Year 7/8s went to Otaki Forks for our overnight leadership camp. We did lots of activities to help us develop our leadership and co-operative skills. They were also lots of much fun. We enjoyed the tramps we did across this wonderful place.

Kaea



Leadership Camp Poem

The still cool air full of dew, was almost visible falling down from the sky.
Drifting in the ever faint breeze flying through the trees bringing up the scarlet
sun peeking through the grey foggy horizon, brightening up the clover green
hills, soon turning yellow as the golden suns presence came closer, to our
shining globe waking up the sleeping land. The tents begin to glow with
glittering orange, as quiet tired whispers from the other early wakers.
Disturbing the silent morning.

Mia Trail



WHITIREIA HUBParumoana Cricket - Years 5-8

Yesterday we went to Ngati Toa Domain. We went there to have a go and learn how to play cricket. Before we started a guy told us the rules. There were cones to the right and to the left, we ran around one and back to the wicket and that counted as one run. There were four teams - two year 7 and 8 teams and two year 5 and 6 teams. At the end there was a cardboard box full of squishy cricket balls and we all got one. Thanks for all the helpers at the cricket.

By Corbin



Camp Report

On the way to camp this year, we went to a bird reserve called Ngā Mānu. The highlight at Ngā Manu was touching an eel that an instructor caught with his hands. It was so slimy! We also enjoyed this tower called the Mackenzie Tower. It was around fifteen metres high, it was also so much fun. For camp this year we went to El Rancho which was an excellent choice. There were so many activities such as chapel escape, wilderness survival, waterslide, kayaking, tubing. Here are some of the highlights.

The highlight for chapel escape was this big water pipe with holes in it and we had to get the ping pong ball out of it by pouring water down it but the twist was we had to block the hole with our fingers which was very tricky. The second highlight for camp was tubing, where we got to ride down the stream. The third highlight was kayaking. Our favourite part was when we had to stand up on the kayak and tell the instructors about ourselves. Last but not least, was wilderness survival. The best part was lighting the fire with the flint and steel and we had to keep it going for 5 minutes. We got it going for 7 minutes with dead and dry wood, sticks, and leaves. So that was our highlights from the incredible year 5/6 camp!!! We would also like to thank the awesome parents who took time off work to help with this camp.

by Will and Ollie



Perseverance

Attitude

Understanding

Ambition



POTTY PLANTERS



JOIN US!

We work in the school's nursery, and occasionally in the community, every Tuesday from 9am-12pm, during term time. Come along any time and pot up plants or gain some plant propagation skills.

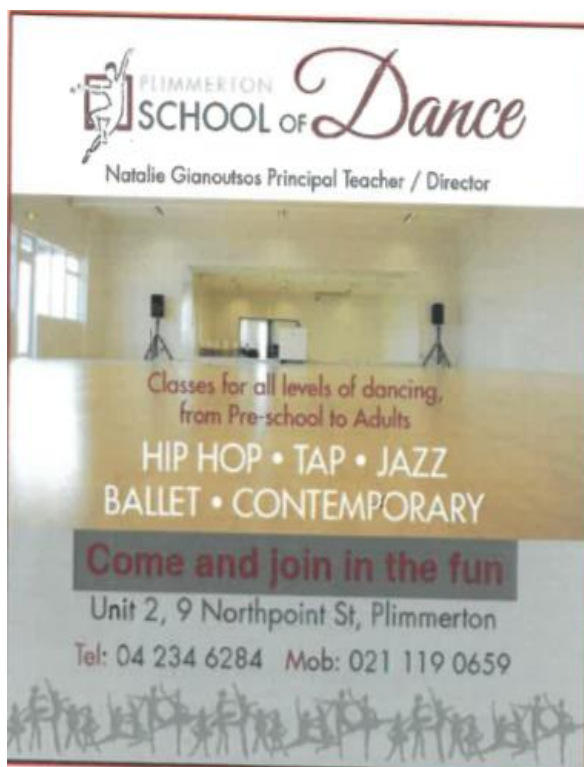
All the funds that we raise go *directly* to school resourcing, keeping school fees low.

**NO GARDENING OR PLANT KNOWLEDGE
REQUIRED!
SUPPLIES AND TOOLS ARE PROVIDED!**

CHECK OUT OUR FACEBOOK PAGE @PAUATAHANUIPOTTYPLANTERS

OUR ADVERTISERS

THANK YOU VERY MUCH TO OUR LOYAL SPONSORS WHO HELP IN MANY WAYS
PLEASE CONTACT THE OFFICE IF YOU WOULD LIKE TO ADVERTISE HERE
office@pauatahanui.school.nz



Mortgage Solutions

Your local Mortgage Advisers covering the Greater Wellington Region to include, Porirua, Hutt & Kapiti.

**For Great Interest Rates and a Great FREE Service –
Call either Liza 027 5626 748 or Simon 027 515 6948
NOW.**

We also donate \$250.00 to Pauatahanui school for every successful applicant! So go on help out your school!

